

SIEMENS



Transducers

ACUSON X700™ Ultrasound System

Release 1 .0

www.siemens.com/ultrasound

TABLE OF CONTENTS

4C1 Transducer.....	3	EV9F4 Transducer.....	6
6C2 Transducer.....	3	EC9-4w Transducer.....	7
C7F2 Transducer.....	4	CW5 Transducer.....	7
4V1c Transducer.....	4	CW2 Transducer.....	8
VF10-5 Transducer.....	5	Soundstar 10F.....	8
VF12-4 Transducer.....	5	AcuNav 10F.....	9
V5Ms Transducer.....	6	AcuNav 8F.....	9



4C1 Transducer

Frequency Bandwidth:	1.0 – 5.0 MHz
Compatible with:	ACUSON S3000™ ultrasound system ACUSON S2000™ ultrasound system ACUSON S1000™ ultrasound system ACUSON Sequoia™ ultrasound system ACUSON Aspen™ ultrasound system
Exam Types:	Abdomen, Early OB, Emergency Medicine, Fetal Echo, OB/GYN, Peripheral Vascular, Renal, Urology, Venous

Design Attributes:

- Curved Vector Format
- Hanafy lens transducer technology
- User-selectable MultiHertz™ multiple frequency imaging



6C2 Transducer

Frequency Bandwidth:	2.0 – 6.0 MHz
Compatible with:	ACUSON S3000 ultrasound system ACUSON S2000 ultrasound system ACUSON S1000 ultrasound system ACUSON Sequoia ultrasound system
Exam Types:	Abdomen, Early OB, Fetal Echo, OB/GYN, Peripheral Vascular, Renal

Design Attributes:

- Curved Vector Format
- Hanafy lens transducer technology
- Ergonomically designed form factor
- User-selectable MultiHertz imaging



C7F2 Transducer

Frequency Bandwidth:	2.0 – 7.0 MHz
Compatible with:	ACUSON X300™ ultrasound system, premium edition (PE) ACUSON X500™ ultrasound system
Exam Types:	Abdomen, Early OB, Fetal Echo, OB/GYN

Design Attributes:

- Curved Vector Format
- Wide bandwidth curved array transducer
- User-selectable MultiHertz imaging
- Ergonomically designed form factor
- Lightweight transducer with flexible cable



4V1c Transducer

Frequency Bandwidth:	1.0 – 4.0 MHz
Compatible with:	ACUSON S3000 ultrasound system ACUSON S2000 ultrasound system ACUSON S1000 ultrasound system ACUSON SC2000™ ultrasound system ACUSON Sequoia ultrasound system
Exam Types:	Abdomen, Cardiac, Emergency Medicine, Transcranial

Design Attributes:

- Hanafy lens transducer technology
- Sector imaging format
- User-selected MultiHertz imaging
- RF shielding



VF10-5 Transducer

Frequency Bandwidth:	5.0 – 10.0 MHz
Compatible with:	ACUSON X300 ultrasound system, premium edition (PE) ACUSON X300 ultrasound system ACUSON X150™ ultrasound system SONOLINE G40™ ultrasound system
Exam Types:	Breast, Cerebrovascular, Emergency Medicine, Musculoskeletal, Orthopedic, Peripheral Vascular, Testicle, Thyroid, Venous

Design Attributes:

- Wide bandwidth linear transducer
- Virtual format imaging
- User-selectable MultiHertz imaging
- Ergonomically designed form factor
- 2D beam steering
- Lightweight transducer with flexible cable



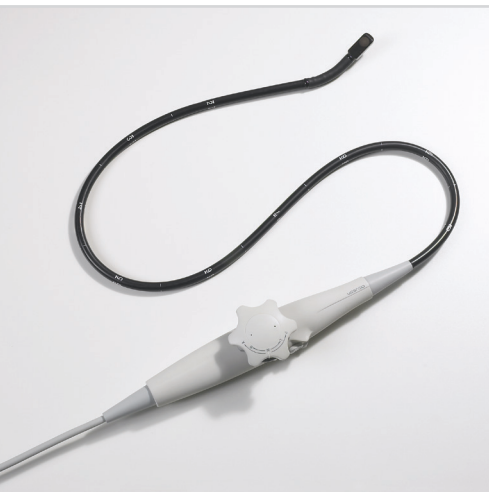
VF12-4 Transducer

Frequency Bandwidth:	4.0 – 12.0 MHz
Exam Types:	Breast, Cerebrovascular, Emergency Medicine, Musculoskeletal, Orthopedics, Peripheral Vascular, Small Parts, Testicle, Thyroid, Venous

Design Attributes:

- Wide bandwidth long linear transducer
- Virtual format imaging
- Hanafy lens transducer technology

* Not commercially available. Due to regulatory reasons, its future availability cannot be guaranteed.



V5Ms Transducer

Frequency Bandwidth:	3.0 – 7.0 MHz
Compatible with:	ACUSON S3000 ultrasound system ACUSON S2000 ultrasound system ACUSON S1000 ultrasound system ACUSON SC2000™ ultrasound system ACUSON X300 ultrasound system, premium edition (PE) ACUSON X300 ultrasound system ACUSON Sequoia ultrasound system ACUSON Antares ultrasound system ACUSON CV70™ cardiovascular system ACUSON Cypress™ cardiovascular system ACUSON Aspen™ ultrasound system ACUSON 128XP/10C™ echocardiography system
Exam Types:	Transesophageal Echo

Design Attributes:

- Wide bandwidth transesophageal transducer
- Endoscope diameter = 10.5 mm, length = 11.0 mm
- Adult tip size: width = 14.5 mm, height = 11.5 mm
- Ergonomic design featuring one-hand control with variable speed rotation – 90° per sec.
- RF shielding
- User-selectable MultiHertz imaging



EV9F4 Transducer

Frequency Bandwidth:	4.0 – 9.0 MHz
Compatible with:	ACUSON X300 ultrasound system, premium edition (PE)
Exam Types:	Early OB, OB/GYN

Design Attributes:

- Curved Vector Format
- Wide bandwidth endovaginal volume transducer
- User-selectable MultiHertz imaging
- Lightweight transducer with flexible cable



EC9-4w Transducer

Frequency Bandwidth: 4.0 – 9.0 MHz

Exam Types: Early OB, OB/GYN, Urology

Design Attributes:

- Wide field of view curved array transducer
- User-selectable MultiHertz imaging
- Lightweight transducer with flexible cable
- Curved Vector Format



CW5 Transducer

Selectable CW Doppler Frequencies: 5.0 MHz

Exam Types: Cerebrovascular, Pediatric Echo

Compatible with: ACUSON S3000 ultrasound system
ACUSON S2000 ultrasound system
ACUSON S1000 ultrasound system
ACUSON Antares ultrasound system
ACUSON X300 ultrasound system, premium edition (PE)
ACUSON X300 ultrasound system
ACUSON X500 ultrasound system
SONOLINE G60 S™ ultrasound system



CW2 Transducer

Selectable CW Doppler Frequencies: 2.0 MHz

Compatible with:	ACUSON S3000 ultrasound system ACUSON S2000 ultrasound system ACUSON S1000 ultrasound system ACUSON Antares ultrasound system ACUSON X300 ultrasound system, premium edition (PE) ACUSON X300 ultrasound system ACUSON X500 ultrasound system SONOLINE G60 S ultrasound system
-------------------------	---

Exam Types:	Adult Echo, Pediatric Echo
--------------------	----------------------------



Soundstar 10F*

Frequency Bandwidth:	4.0 - 10.0 MHz
-----------------------------	----------------

Compatible With:	ACUSON SC2000 ultrasound system ACUSON X300 ultrasound system, premium edition (PE) ACUSON Sequoia C512™ echocardiography system ACUSON Sequoia C256™ echocardiography
-------------------------	---

Exam Types:	Intracardiac Echo
--------------------	-------------------

Design Attributes:

- 10 french catheter (3.3 mm diameter)
- 90 cm insertable length
- Sterile, single-use advanced miniaturization AcuNav™ ultrasound catheter family
- Reusable SwiftLink™ catheter connector
- Four-way steering in two planes: 160° in each direction
- Longitudinal side-fire imaging

* For purchase or inquiries, contact Biosense Webster: USA (1-909-839-8500 and 1-800-729-9010), Belgium (+32-2-352-1411)



AcuNav 10F*

Frequency Bandwidth:	4.0 – 11.0 MHz
Compatible With:	ACUSON S3000 ultrasound system ACUSON S2000 ultrasound system ACUSON S1000 ultrasound system ACUSON SC2000 ultrasound system ACUSON Sequoia C512 echocardiography system ACUSON Sequoia C256 echocardiography system ACUSON X300 ultrasound system, premium edition (PE) ACUSON Aspen ultrasound system ACUSON CV70 cardiovascular system ACUSON Cypress cardiovascular system ACUSON P50™ ultrasound system

Exam Types:	Intracardiac Echo
--------------------	-------------------

Design Attributes:

- 10 french catheter (3.3 mm diameter)
- 90 cm insertable length
- Sterile, single-use advanced miniaturization AcuNav™ ultrasound catheter family
- Reusable SwiftLink™ catheter connector
- Four-way steering in two planes: 160° in each direction
- Longitudinal side-fire imaging

* For purchase or inquiries, contact Biosense Webster: USA (1-909-839-8500 and 1-800-729-9010), Belgium (+32-2-352-1411)



AcuNav 8F*

Frequency Bandwidth:	4.0 – 10.0 MHz
Compatible With:	ACUSON S3000 ultrasound system ACUSON S2000 ultrasound system ACUSON S1000 ultrasound system ACUSON SC2000 ultrasound system ACUSON Sequoia C512 echocardiography system ACUSON Sequoia C256 echocardiography system ACUSON X300 ultrasound system, premium edition (PE) ACUSON Aspen ultrasound system ACUSON CV70 cardiovascular system ACUSON Cypress cardiovascular system ACUSON P50 ultrasound system

Exam Types:	Intracardiac Echo
--------------------	-------------------

Design Attributes:

- 8 french catheter (2.7 mm diameter)
- 90 cm insertable length
- Sterile, single-use advanced miniaturization AcuNav ultrasound catheter family
- Reusable SwiftLink catheter connector
- Four-way steering in two planes: 160° in each direction
- Longitudinal side-fire imaging

* For purchase or inquiries, contact Biosense Webster: USA (1-909-839-8500 and 1-800-729-9010), Belgium (+32-2-352-1411)

Frequency Bandwidth measurements represent bandwidth at ± 20 dB.

128XP/10C, AcuNav, ACUSON P50, ACUSON S1000, ACUSON S2000, ACUSON S3000, ACUSON SC2000, ACUSON X150, ACUSON X300, ACUSON X500, ACUSON X700, Aspen, CV70, Cypress, Elegra, G40, G50, G60 S, MultiHertz, Sequoia, SONOLINE and SwiftLink are trademarks of Siemens Medical Solutions USA, Inc.

DS 1112 | © 11.2012, Siemens Medical Solutions USA, Inc.

Global Siemens Headquarters

Siemens AG
Wittelsbacherplatz 2
80333 Muenchen
Germany

Global Siemens Healthcare Headquarters

Siemens AG
Healthcare Sector
Henkestrasse 127
91052 Erlangen
Telephone: +49 9131 84-0
Germany

www.siemens.com/healthcare

Legal Manufacturer

Siemens Medical Solutions USA, Inc.
Ultrasound
685 East Middlefield Road
Mountain View, CA 94043
USA
Telephone: 1-888-826-9702
www.siemens.com/ultrasound