

ADVANCED • SHOCKWAVE • TECHNOLOGY

LITHOSPACE

SPACE ON DEMAND



LITHOSPACE

The Concept

A Revolutionary New Lithotripter Combined with an Endourological Workstation



The LithoSpace® is the first small, flexible, and effective lithotripter to complement the new urologic workstation of the 21st century for extracorporeal treatments of urolithiasis using electrocaustic emitter shockwave generator.

As the minimally invasive urology workstation has developed, technological improvements in the urologist's armamentarium have improved patient outcomes - both in diagnostic and therapy.



The LithoSpace® is an electro-hydraulic lithotripter which utilizes a revolutionary imaging system, SuperVision with ultrasound localization where the the transducer stay at a fixed position for the following of the treatment.

The LithoSpace® easily pairs with imaging modalities and tables currently available, without mechanical adaptation. When not in use, the LithoSpace® is moved to the side, so the operating theater is available to perform other surgical procedures.



The shockwave applicator provides treatment for almost every stone location and in any patient position. Using simultaneous treatment X-ray and ultrasound.

The digital Urological workstation is equipped with a 17" LCD color monitor and a DVD/CD recorder with a capacity for more than 10 000 Images it will help the specialist in analyzing, processing and post processing the images.

Perfect Combination

Use your existing imaging and/or tables - thus eliminating the need to purchase additional equipment.



Ultrasound

Combine your existing ultrasound device with the LithoSpace®



X-ray

Combine your existing C- arm with the LithoSpace®



Endo-urology Table

Combine your already existing endo-urology table with the LithoSpace®



AST LithoSpace® Basis

LithoSpace® including ultrasound device and endo-urology table



AST LithoSpace® Endo

LithoSpace® including ultrasound device, C-arm and endo-urology Table



Performance custom-made

Technology for superior stone-free results and minimal tissue damage

16 kV Energy level

Maximum pressure: 26.10 MPa
Minimum pressure: -3.60 MPa

Therapeutic Volume at 17 MPa Isobar
Axial 116 to 180 mm
Max. lateral diameter 10 mm

Energy density: 0.14 mJ/mm²

22 kV Energy level

Maximum pressure: 35.20 MPa
Minimum pressure: -4.10 MPa

Therapeutic Volume at 17 MPa Isobar
Axial 80 to 205 mm
Max. lateral diameter 16 mm

Energy density: 0.27 mJ/mm²

26 kV Energy level

Maximum pressure: 37.90 MPa
Minimum pressure: -5.00 MPa

Therapeutic Volume at 17 MPa Isobar
Axial 60 to 220 mm
Max. lateral diameter 20 mm
Frequency 120 pulse /min

Energy density: 0.40 mJ/mm²
Shockwave applicator diameter: 178 mm

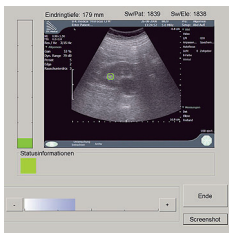
Length: approx. 163 cm
Width: approx. 81 cm
Height in parking position: approx. 90cm
Weight: approx. 250Kg

Certified according to EN ISO 13485:2003
and EC guideline 93/42/EWG, appendix
II, 220 VAC / 60Hz Single-phase



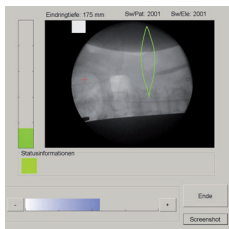
Truly Innovative

Intuitive user guidance in your control



Visualize the Focal Zone

With SuperVision, the physician sees where the stone is in the therapeutic volume of the shockwave. This real time visualization improves clinical outcomes and reduces the chance of injury to the patient. With a ECG shutter/trigger.



The Stone in the Center of the Therapeutic Volume

The large focal diameter of the LithoSpace® improves stone fragmentation and reduces the chance of tissue damage. ESWL research indicates a large focal area is the most effective and minimizes side effects with a focal distance of 205mm and focal spot size of 16mm x 121mm ensures the best possible performance.

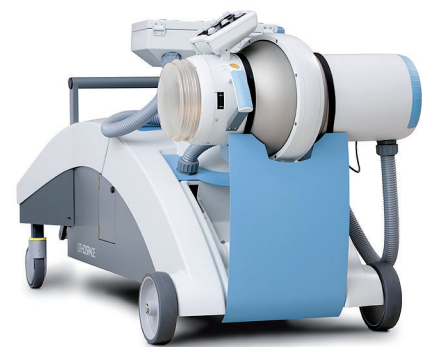


Complete Positioning Flexibility

The shockwave applicator can be positioned in almost any position, thus enabling the shockwave to enter the body in a comfortable position for the patient and to optimize treatment depending on the anatomy of the patient.

After the Treatment

When not being used, the LithoSpace® can easily be stored away. Set up time is approximately 5 minutes. The images also can be shared using DICOM 3.0, print, storage, store and worklist.





ADVANCED
•
SHOCKWAVE
•
TECHNOLOGY

All installations and pre-
installation works will be
done by authorized AST
personal or by local
distributors authorized by
AST GmbH

AST GmbH
Moritz-von-Rohr-Str. 1a
07745 Jena
Germany
Tel: +49 (0) 3641 5049-0
Fax: +49 (0) 3641 5049-29

e-Mail: info@ast-jena.de
Internet: www.ast-jena.de

LSP 112 00

AST
Advanced
Shockwave Technology
GmbH