

The Leader of Digital Imaging System



CLASCAN™

Digital Remote Radiographic & Fluoroscopic System



LISTEM
Life Science System

NEW DIGITAL REMOTE R/F SYSTEM

- ERGONOMIC & FLEXIBLE DESIGN
- EFFICIENCY OF WORKFLOW
- HIGH IMAGE QUALITY & TECHNOLOGY
- OPTIMIZED DOSE REDUCTION



ERGONOMIC & FLEXIBLE DESIGN

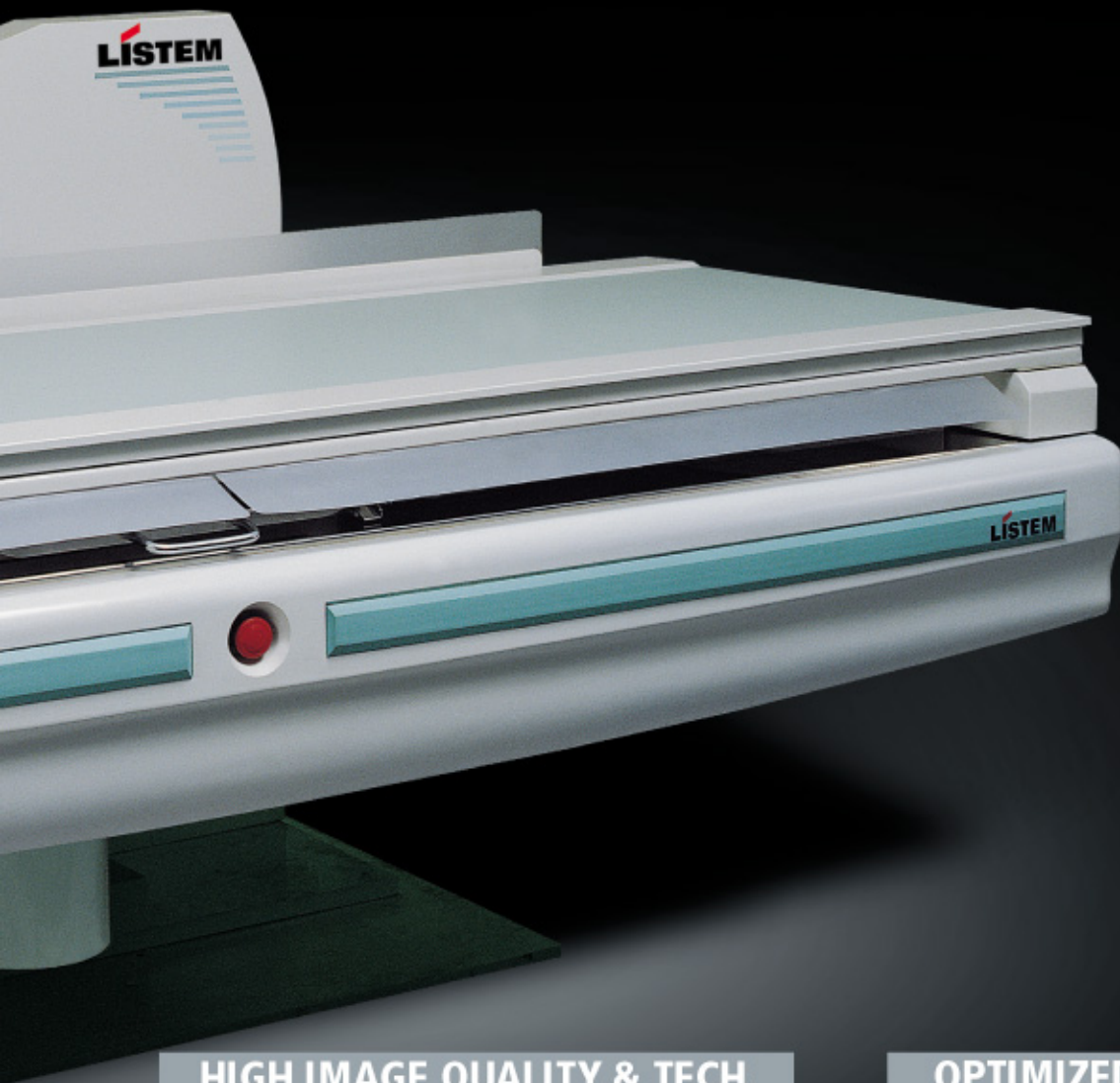
For the convenience of patient and operator

EFFICIENCY OF WORKFLOW

Versatile and compact system that maximizes the efficiency of your workflow



- **Wide moving range of the table top and tube stand**
to cover whole body of the patient for efficient examination
- **Easy operation** of Digital R/F system
- **Superior digital image processing system**
enhances the accuracy of diagnosis



HIGH IMAGE QUALITY & TECH.

High resolution digital spot image and high speed image with software of advanced technology

OPTIMIZED DOSE REDUCTION

High quality image chain of carbon fiber table top minimizes x-ray attenuation at the table

Meets the need for the versatile R/F examinations required in today



90° Table Tilting

90 degree tilting of the table allows
Upper and Lower Digestive System
examination



Trendelenburg Position

Minus 20 degree tilting of the
table enables the observation of Pylorus
Portion during Upper GI examination.



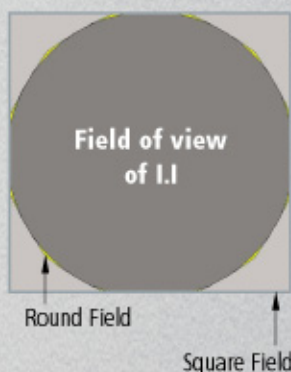
±40° Tube Angle

A previously unheard ±40° X-ray
tube tilting useful for orthopedic
examinations.



Maximum load **210Kg**

's hospital!



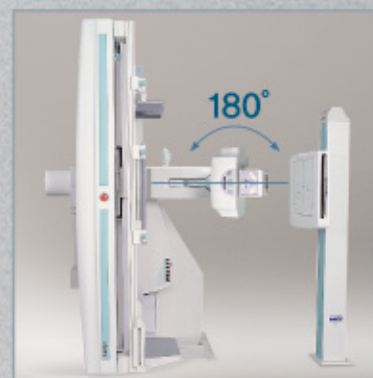
Motorized Round & Square Field X-ray Collimator

- Multi-layered Square Field for Radiography (Cassette Bucky)
- Single-layered Round Field (Iris Shutter) for Fluoroscopy (Image Intensifier)
- Match the Exposure Field to the Selected FOV
- Achieve High Image Quality and Reduce Unnecessary Patient Dose



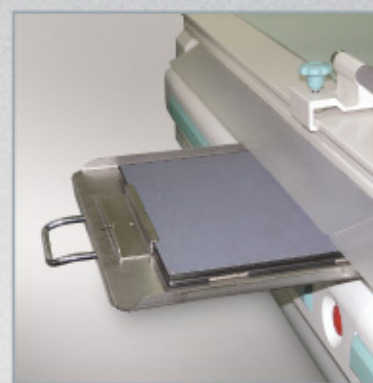
90° Tube Rotation

X-ray tube/collimator assembly can be rotated 90 degree to accommodate the radiography of the emergency patient admitted in the R/F room.



180° Tube Rotation

180 degree X-ray tube / collimator rotation for wall Bucky radiography is possible to for Chest examination.



Cassette Tray

Orthopedic and Urological examinations are possible with 43 cm x 30 cm IP cassette

► IP (Imaging Plate for Computed Radiography)

Superior Image Quality at the Low

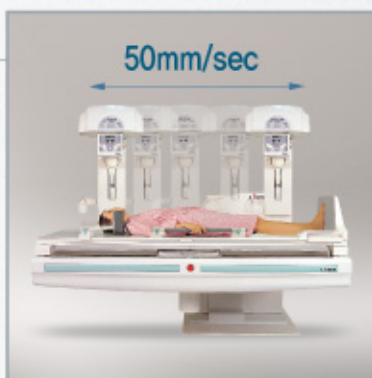
SID

With SID of 100~150 cm, **Chest Radiography** is possible while patient lies on the table which provides actual size image. Also it can change size of various F.O.V. for magnified image.



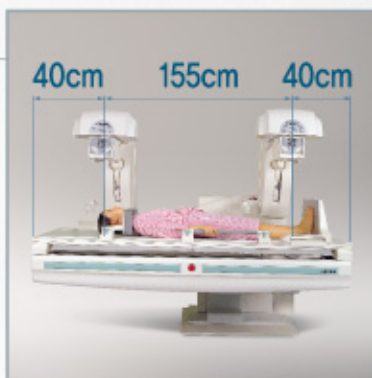
Tube Stand Moving Speed

Fast tube stand movement maximizes the efficiency of Upper and Lower Digestive Tract examination.

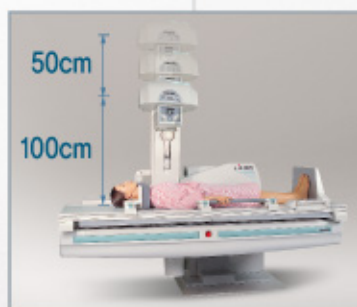


Tube Stand Max. Moving Range

It gives you both patient comfort and easy use - ERCP, URO Studies is possible without moving the patient.



Tube Stand Moving

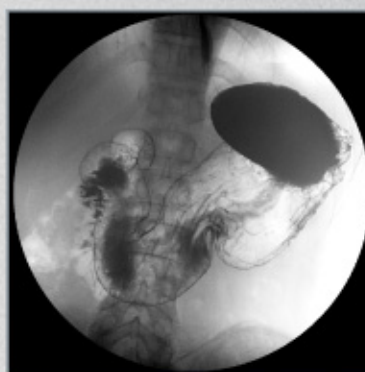
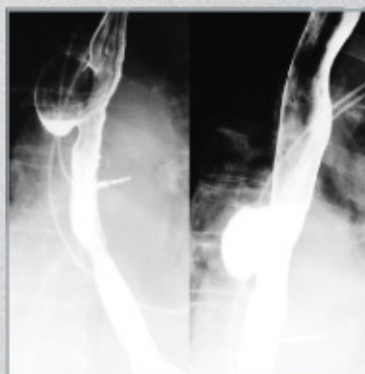


Lowest Possible Dose

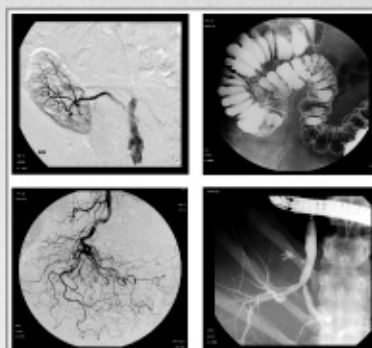
- High resolution : 1k x 1k, 12 bit
- High speed data acquisition : Max 30 fps



Digital Image Processing Feature



High Quality Image Intensifier



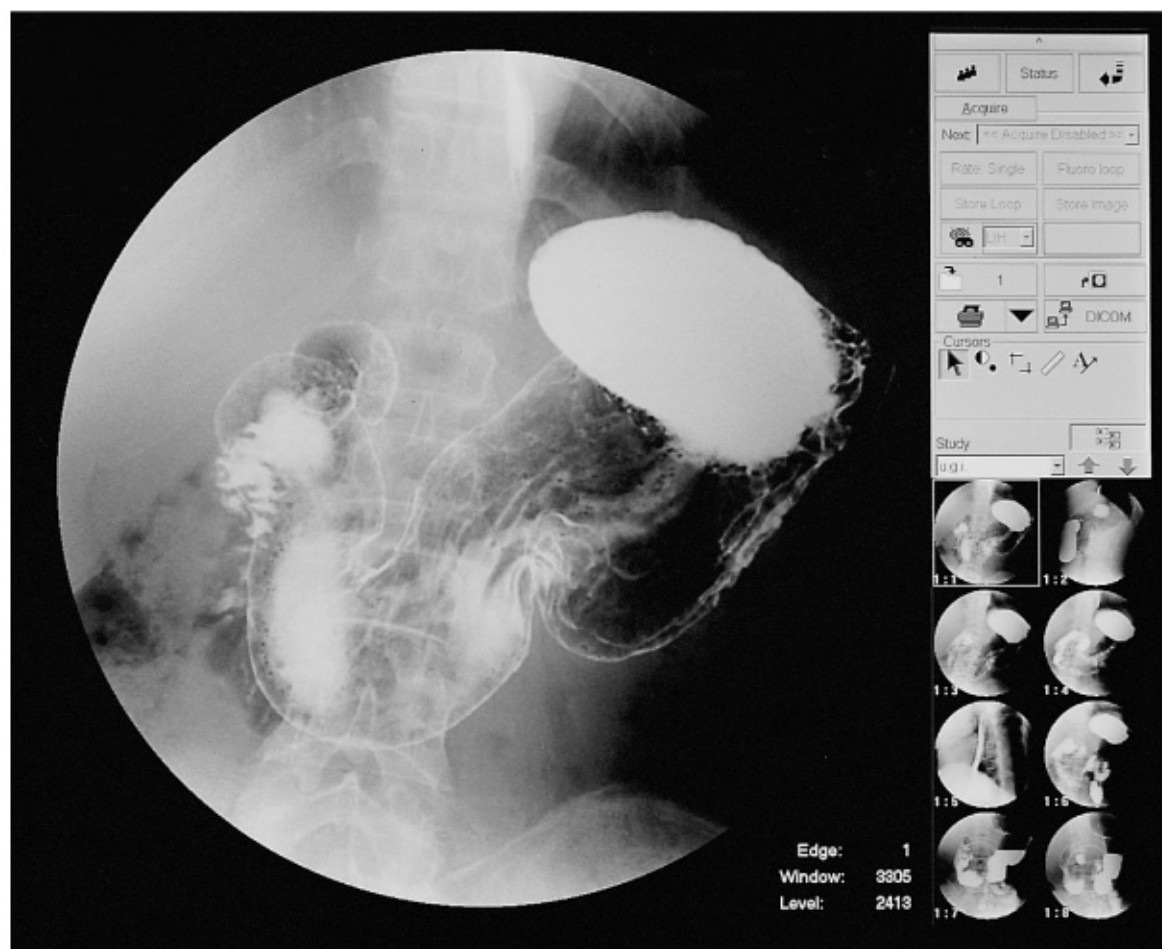
- High-resolution and contrast image intensifier suitable for DF & DR.
- Excellent image quality thanks to high DQE
- 9", 12", 16" is available

High Quality Digital CCD



- Maintaining the optimum image quality with Auto Gain Control, Brightness, Black Compensation functions.
- 12-bit gray scale image acquisition with 1k X 1k pixels resolution at 30 frames per seconds rate

Real Time Automatic Image Optimization

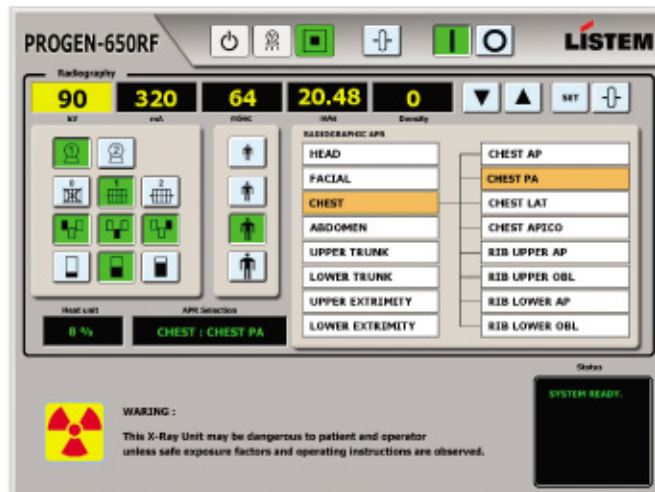


Digital Image Processing System

- Real-time automatic image optimization ensures the best image quality
- DICOM 3.0 compatible network interface includes worklist, print, store, query/retrieve, perform procedure step, and storage commitment class for integration with any PACS or RIS
- Fluoro loop acquisition to hard drive
- Automatic system calibration and remote system diagnostics
- Thumbnail image viewing and auto-loop replay
- Brightness / contrast / polarity / real-time edge enhancement
- Measurement and annotation package
- Pulsed fluoroscopy capability

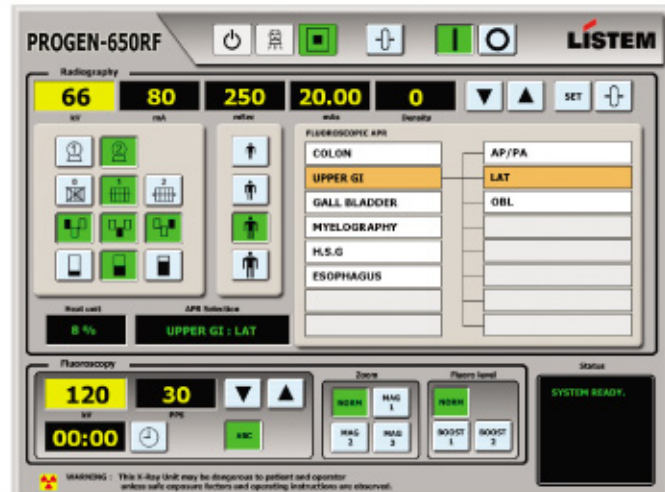
Generator Console

Radiography Mode



- Real-time monitoring of exposure conditions
- Auto-calibration without using calibration equipments
- Anatomical Programs (APR)
 - Radiography : 768 , Fluoroscopy : 72
- High Level Pulsed Fluoroscopy Function
 - Normal, Boost1, Boost2

Fluoroscopy Mode

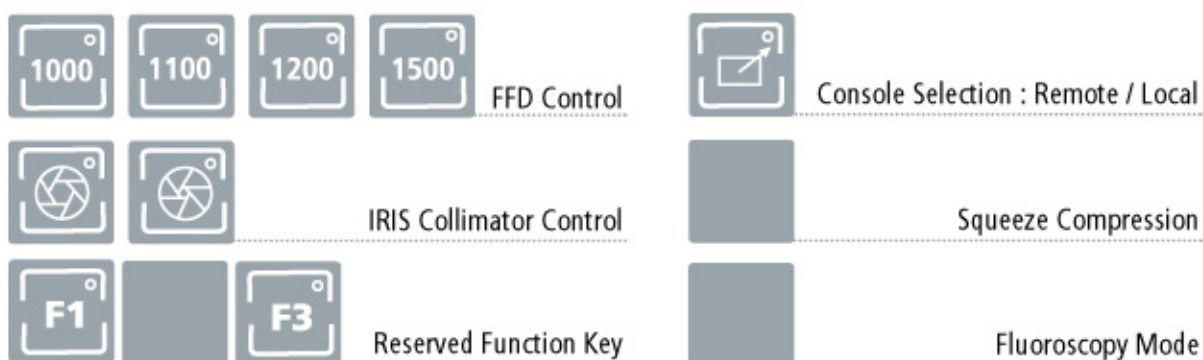


- LCD Touch screen, compact and slim design console
- Excellent AEC accuracy
- Pulsed Fluoroscopy capability
- Self Diagnostics
 - Status & Error Messages

Full System



Versatile Console* for the Smooth Operation



* Local & Console is provided as an option.

Advantages of using CLASCAN in Digital Environment of Hospital

- High resolution Digital image acquisition and fast image processing
- Full DICOM Configuration as standard.
It is very easy to transfer image through PACS network system by using DICOM 3.0
- No need of film, cassette, chemical and other accessories saves operating costs and environment

